



**SUSTAINABLE
FORESTRY
INITIATIVE
PENNSYLVANIA**

SFI-01141

Winter 2025
(Issue # 55)

**Pennsylvania SFI
Implementation Committee
(SIC) Members**

Kyle Troutman, Chair, Weaber Inc.*
Bryan Rose, Vice-Chair, Domtar*
Chuck Coup, Program Manager
Doty McDowell, Dir. Of Outreach and Dev.
Mark Ott, Administrative Coordinator

David Andrus, Three Rivers Forest Mgmt.
(Representing The Lyme Timber Company*)
Daniel Anna, Jr., Anna's Consulting Forestry
Shelby Chorba, Northern Tier HW Association
Matt Gabler, PA Forest Products Association
Jonathan Geyer, PA Hardwood Dev. Council
Annie Husa, Manulife Investment Mgmt.*
Matt Keefer, PA Bureau of Forestry*
Mark McCall, Pixelle Specialty Solutions*
Wes Miller, A.M. Logging
Gordy Mow, Sus. Forestry Initiative, Inc.
Allyson Muth, James C. Finley Center for Private
Forests
Mark Ott, Forest Landowner, PFA (non-voting)
Garin Peck, Metzler Forest Products
Stephanie Phillips-Taggart, KWPA
Ron Rohall, PA Association of Cons. Districts
Sean Ross, The Lyme Timber Company*
Aaron Rowles, Aaron Rowles Logging
Amy Shields, Allegheny HW Utilization Group
Todd Sparks, Nuveen Natural Capital*
Dominic Stelzer, Ind. Stave Company*
Roger Stoll, Weyerhaeuser Co.*
Aaron Tyson, Pennsylvania Game Commission
Jason Wenrich, FORECON, Inc. (Representing
FIA*, FD Timber*, Jamestown*)
Travis Whatley, Georgia-Pacific, LLC*
Barrett Wiggins, Deer Park Lumber Co.

* Denotes certified SFI®-Certified Organization

For questions or comments regarding the PA SIC
newsletter or to unsubscribe, contact:

**Pennsylvania SFI®
Implementation Committee**

Chuck Coup, Program Manager
211 Barrington Lane
Bellefonte, PA 16823
(814) 355-1010 or
(888) 734-9366 (toll free)
Fax: (814) 355-1022

pasfi@sfiopa.org / www.sfiopa.org

**Pennsylvania
Sustainable Forestry Initiative®
Implementation Committee (SIC)**

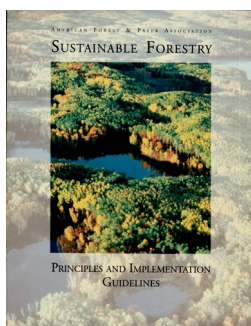
NEWS

**30 Years of SFI and the Pennsylvania SFI
Implementation Committee**

This year, the Sustainable Forestry Initiative (SFI) is celebrating its 30th anniversary, marking three decades of remarkable progress in advancing sustainable forest management across North America.



SFI was founded in 1995 with a mission to broadly promote sustainable forestry practices, improve forest health and productivity, protect lands of special significance (e.g., biologically, geologically, or historically significant), and to continuously improve the practice of forest management. The initiative was born in response to growing public concerns about the environmental impacts of forest management, particularly regarding deforestation and the loss of wildlife habitat, especially on public lands. The forest products industry was realizing at the time that it had a credibility problem. It was viewed as part of the problem, rather than part of the solution. However, instead of seeking cosmetic changes through public relations messaging, the industry resolved that it needed real substantive changes in its performance. The SFI program set out to create a new system that would change the status quo and benefit not only the environment but also the people who rely on forests for their livelihoods, recreation, and cultural heritage.



On January 1, 1995, the American Forest & Paper Association (AF&PA) – an organization whose 425 members, at the time, accounted for approximately 95% of the paper production, 65% of the solid wood production, and 90% of the industrial forestlands in the United States – officially rolled out its new SFI Program. The heart of the program was the “Sustainable Forestry Principles and Implementation Guidelines” that represented, in writing, the industry’s commitment to fundamentally improve. The guidelines established clear objectives and performance measures by which the public itself could evaluate whether AF&PA members were meeting their commitments.

In the early years of the SFI Program, the members recognized that the principles and practices of sustainable forestry laid out in SFI’s new guidelines could not be applied in a “one-size-fits-all” manner. Forests across North America of course vary significantly in terms of ecosystem types, climate, biodiversity, and socio-economic factors. As a result, a more decentralized, locally-focused approach was necessary to implement the SFI Program.

Local “Implementation Committees” were quickly established in 1995 and 1996 by SFI members to ensure that the SFI standards were being effectively applied across a wide variety of forest types and regional conditions in the United States. The Committees were made up of diverse stakeholders including forest managers, academics, conservationists, government agencies, community members, landowners, and loggers. By involving a variety of local stakeholders and experts, the Implementation Committees helped ensure that the SFI program was both rigorous and adaptable to different contexts. This grassroots network of Committees, unique to SFI among existing forest certification systems, allowed the program to be more responsive to local concerns and build greater trust with stakeholders by fostering collaboration between groups with differing perspectives and opinions on managed forests. Today, nearly 1,000 people comprise the 35 SFI Implementation Committees that operate across the United States and Canada.



(Continued on next page)

Sustainable Forestry Initiative®

At the Sustainable Forestry Initiative (www.forests.org), we believe that sustainable forests are critical to our collective future. SFI is a sustainability leader through our work in standards, conservation, community, and education.

At the heart of the SFI Program are SFI Implementation Committees (SICs). The Pennsylvania SIC is one of 35 spread across North America that responds to needs and issues through the SFI Program at the local level. This grassroots network is unique to the SFI Program.

The Pennsylvania SIC's purpose is to promote wise forest stewardship, enabling Pennsylvania communities to thrive through a successful forest products industry. We work hard to support business operations by training and developing the logger workforce, educating the public about the value of working forests, promoting SFI forest certification, and assisting with regulatory issues. Our alliance of deeply committed professionals from across the forestry community builds partnerships with many other conservation organizations who depend on the forest industry to advance their own missions. These relationships allow us to serve with great impact.

Learn more at www.sfiopa.org

SFI®-Certified Organizations Supporting the PA SIC

These companies operate in Pennsylvania and are certified to be in conformance with the SFI Standard. They also provide direct involvement and financial support to the Pennsylvania SFI® Implementation Committee (SIC).

PA DCNR Bureau of Forestry

Domtar Corporation

Forest Investment Associates

Georgia-Pacific, LLC

IM FD Timber, LLC

Independent Stave Company

Jamestown, LP

Manulife Investment Management

Nuveen Natural Capital

Pixelle Specialty Solutions

The Lyme Timber Company, LP

Weaber, Inc.

Weyerhaeuser Co.

Winter 2025, Issue #55

- 2 -

The Pennsylvania SFI Implementation Committee (PA SIC) was formed in June of 1995 and became "housed" within the Pennsylvania Forest Products Association (formerly the Hardwood Lumber Manufacturers Association of Pennsylvania) the following year. Like other Implementation Committee's, the PA SIC's early focus was



Ken Manno, Program Manager (1996-2009) providing outreach at Ag Progress Days in 2003

on establishing itself as an organization and developing the collaborative programming that would support achievement of the new SFI guidelines. A state-wide logger training program was developed and piloted across the Commonwealth; best Management Practices (BMPs) were promoted; thousands of informational packets designed to help forest landowners make better decisions about the management of their woodlands were developed and distributed; and an inconsistent practices protocol was established for accepting and

addressing concerns raised over practices that appeared to be inconsistent with the SFI program. These early programs continue to form the heart of the PA SIC's work today.

Pennsylvania holds notable significance in the history of the SFI Program and the Implementation Committees. In August 1996, Pittsburgh hosted the inaugural meeting of the SFI Implementation Committees. Over 60 representatives from State implementation Committees, industry, associations, the Expert Review Panel, the SFI Implementation Task Group, and the Tree Farm Program gathered for two days to learn from each other and assess state-level progress of implementing the new SFI guidelines. That same year, the Pennsylvania legislature became the first in the country to pass resolutions formally endorsing the SFI Program. Several key planning meetings were held early in the program's history at Grey Towers National Historic Site in Milford, PA. In September of 1996, the PA SIC became the first Implementation Committee in the country to hire a full-time staff member to coordinate its operations and programming. This role was taken on by Ken Manno (1996-2009). In 2001 the PA SIC was recognized for its outstanding work in implementing the SFI Program by being awarded the 3rd ever annual SIC Achievement Award. The PA SIC received this recognition again in 2015 and 2024.



Pennsylvania's 2001 SIC Achievement Award

Today, the SFI program is operated by SFI Inc., a fully independent non-profit organization governed by an 18-member Board of Directors and overseen by a voluntary External Review Panel. The SFI External Review Panel ensures credibility by providing ongoing, independent review of SFI and its work. SFI's 1996 "Sustainable Forestry Principles and Implementation Guidelines" formed the foundations of SFI's "living" certification standard and have gone through several significant revisions. Today, they are the benchmark that SFI Certified Organizations are measured against by independent 3rd-party auditors. More than 370 million acres are certified to the SFI Forest Management Standard and millions more are positively influenced by the SFI Fiber Sourcing Standard. Products certified under the SFI standard are sold in nearly 90 countries around the world.

(Continued on next page)

PA SFI® Implementation Committee Partners

SIC Partners and their products or services are not SFI certified, but they help to promote sustainable forestry practices throughout Pennsylvania and pledge a contribution annually to the Pennsylvania SIC based on mill production from PA forest resources.

A&L Wood Inc.
Cummings Lumber Co., Inc.
D.H. Dubel Mill & Lumber, LLC
Deer Park Lumber, Inc.
Dwight Lewis Lumber Company, Inc.
Gessner Logging & Sawmill, Inc.
Heacock Lumber Company
JM Wood Products LLC
Kronospan USA - Clarion Boards, LLC
Lee Brothers Lumber
Lewis & Hockenberry, Inc.
Mark & Olivia Ott
Ordie Price's Sawmill, Inc.
Patterson Lumber Co., Inc.
Penn-Sylvan International
Pine Creek Lumber Co.
Renno Brothers Lumber Co.
Salem Hardwood, Inc.
St Marys Lumber Company
Soap Stone Sawmill, LLC
Solts's Sawmill, Inc.
Trumbull Forest Products

PA SFI® Implementation Committee Supporters

SIC Supporters and their products and services are not SFI certified, but they help to promote sustainable forestry practices and pledge meaningful contributions to the Pennsylvania SIC.

A.M. Logging, LLC
Bingaman & Son Lumber Co., Inc.
Blue Ox Timber Resources, Inc.
Brownlee Lumber, Inc.
C&C Smith Lumber, Co., Inc.
Cessna Brothers Lumber
Charles Brown Forestry Consulting
Eby Sawmill
Emporium Hardwoods
Frank Krammes Timber Harvesting, Inc.
Frey Lumber Company
Forcey Lumber Company, Inc.
Horizon Wood Products, Inc.
Metzler Forest Products, LLC
Mountainside Hardwoods
Murdock Forest Management, LLC
Noll's Forestry Services, LLC
Northwood Resources, Inc.
Pennsylvania Game Commission
Postlewait Logging Company
R.J. Hoffman & Sons, Inc.
RAM Forest Products, Inc.
Remmey - The Pallet Company
Springfield Hardwood Products, LLC
Superior Lumber, Inc.
WBL Hardwoods
W.J. Cox Associates
Weaver Brothers Sawmill
Wheeland Lumber
WOODBED Corp

The SFI Program has also expanded its focus to embrace a wider range of forest sustainability issues. Its current strategic direction is grounded in promoting responsible forestry and sourcing, providing nature-based solutions from the SFI footprint, fostering a lifetime of learning, and creating positive change that sustains communities. SFI advances forest conservation research through grants, direct funding, and partnerships, and it is the national sponsor of Project Learning Tree, which reaches 2 million students every year.

The PA SIC has also evolved and continues to serve as the local face of the SFI program. It provides a forum where all segments of Pennsylvania's forest sector can come together to deepen their understanding of one another and work towards shared goals. It provides a means for SFI Certified Organizations to effectively address their commitments under the SFI standard, ensuring critical initiatives like logger training, forest landowner outreach, public education, and the resolution of inconsistent practices complaints are carried out consistently and efficiently.



2015 Pennsylvania SFI Implementation Committee stakeholder meeting

Reflecting on the past 30 years, the PA SIC and its partners are very proud of many successes and accomplishments. The organization has played an instrumental role in raising awareness about sustainable forestry and responsible timber harvesting practices across Pennsylvania. Thousands of loggers and timber harvesting stakeholders have benefited from comprehensive training on forest stewardship and logging safety. Decades of experience in advocating for the proper implementation of forestry Best Management Practices has allowed the PA SIC to be recognized as a technical expert and a trusted voice on statewide BMP policy and issues. The PA SIC's early distribution of over 26,000 forest landowner information packets laid the foundation for ongoing educational outreach, and today, the PA SIC's newly redesigned website remains a go-to resource hub for foresters, loggers, landowners, and other forest professionals (<https://sfiofpa.org/>). The PA SIC has been able to support numerous programs that further our mission and continuously partners with other organizations on important initiatives that are driving sustainable forest management forward in Pennsylvania.

The success of the PA SIC over the last three decades is a direct reflection of the unwavering dedication of our Committee's founding members, its staff, our financial contributors, and the many partners who have stood alongside of us. With their support, the PA SIC has not only promoted sustainable forestry in Pennsylvania but has also empowered individuals and organizations to take meaningful action in Pennsylvania's forests that will benefit generations yet to come.

As we consider the next 30 years, we look forward to finding new and innovative ways of advancing sustainable forestry through forest-focused collaborations with partners and supporters that share our vision of a world that values and benefits from sustainably managed forests. We hope you will join us.



The Sustainable Forestry Initiative is a service of SFI, Inc.

PA SFI Professional Timber Harvester Training Program

The Pennsylvania SFI Professional Timber Harvester Training Program is geared towards commercial timber harvesters; however, it is open to any individual interested in participating. Courses are offered in the spring (mid-March through mid-May) and the fall (mid-September through mid-November) at locations across Pennsylvania each year.

Learn more:

www.sfiopa.org/requirements

Register for classes:

www.sfiopa.org/register

Find SFI Qualified Logging Professionals or review your training records:

www.sfiopa.org/search

Follow Us:



[Facebook.com/PennsylvaniaSIC](https://www.facebook.com/PennsylvaniaSIC)



[Instagram.com/sfiscifpa/](https://www.instagram.com/sfiscifpa/)

Winter 2025, Issue #55

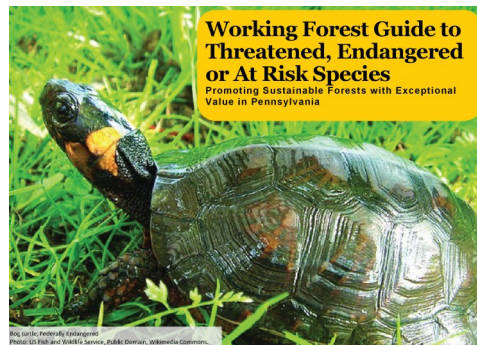
- 4 -

Pennsylvania Sustainable Forestry Initiative® Implementation Committee (SIC)

NEWS

New Resource for Threatened & Endangered Species Management

Pennsylvania has 16.6 million acres of forest land which are home to many exceptional flora and fauna, including rare, threatened and endangered plant and animal species that rely on these woodlands for food, shelter, and habitat.



Forest management actions can have both positive and negative impacts on at-risk species.

The Pennsylvania SFI Implementation Committee recently partnered with the DCNR Bureau of Forestry to write a new guide that can help foresters, loggers, landowners, and other individuals in managing forests with exceptional conservation value. It provides guidance on increasing biodiversity and protecting high value forests which may include threatened and endangered species. The guide is available in print hardcopy or digital download from the Pennsylvania SFI Implementation Committee website (<https://sfiopa.org/publications/>).

Publication of this guide was made possible through a Community Grant awarded by the Sustainable Forestry Initiative.



Pennsylvania Sustainable Forestry Initiative[®]

Implementation Committee

Professional Timber Harvester Training Program

2025 Spring Training Schedule

➤ To register, please visit: www.sfiopa.org/register, or submit the registration form on the back of this page.

CORE

- *Basic First Aid & Adult CPR does NOT qualify for continuing education credit*
- *Professional Timber Harvesting Essentials and/or Game of Logging – Level 1 can be taken for CE Credit, IF you have not already completed the training in the last 5 years*

Course Date	Time	Course Name (Course Descriptions on Registration form)	Location	Cost +	Register By	
03/28/25	Fri	9:00 AM	Basic First Aid and Adult CPR (4 hours)	Johnsonburg (Elk County)	\$ 50.00	03/21/2025
04/07/25	Mon	7:30 AM	Game of Logging - Level 1 (8 hours)	Blain (Perry County)	\$ 150.00	03/31/2025
04/14/25	Mon	8:00 AM	Professional Timber Harvesting Essentials (8 hours)	Reading (Berks County)	\$ 150.00	04/07/2025
04/16/25	Wed	7:30 AM	Game of Logging - Level 1 (8 hours)	Aristes (Columbia County)	\$ 150.00	04/09/2025
05/02/25	Fri	8:00 AM	Professional Timber Harvesting Essentials (8 hours)	Penfield (Clearfield County)	\$ 150.00	04/25/2025
05/05/25	Mon	7:30 AM	Game of Logging - Level 1 (8 hours)	Penfield (Clearfield County)	\$ 150.00	04/28/2025
05/12/25	Mon	8:00 AM	Professional Timber Harvesting Essentials (8 hours)	Kane (McKean County)	\$ 150.00	05/05/2025
05/14/25	Wed	7:30 AM	Game of Logging - Level 1 (8 hours)	Wellsboro (Tioga County)	\$ 150.00	05/07/2025

- ◆ Any employed resident of Pennsylvania is eligible to apply for up to 50% reimbursement of their training registration fees through the AgConnect program. For more information visit: <https://bit.ly/3TinTnM>
- ◆ Employees insured through Eastern Alliance Insurance Group can have the registration fee for Game of Logging classes paid by WJ Cox Insurance. Please submit proof of insurance with your reg. form.
- ◆ Northern Tier Hardwood Association Members can apply for a 50% reimbursement of registration costs after completing courses. Contact NTHA at (570) 265-7753.
- ◆ Allegheny Hardwood Utilization Group (AHUG) has generously subsidized the registration fee for Basic First Aid and Adult CPR training.

CONTINUING EDUCATION TRAINING

➤ One (1) year of CE credit is given for each four (4) hours of training completed. Refer to the Program Policy for complete details on training requirements: www.sfiopa.org/requirements

Course Date	Time	Course Name (Course Descriptions on Registration form)	Location	Cost +	Register By	
03/22/25	Sat	8:00 AM	Hydraulic System Safety & Maint (8 hours)	Montgomery (Lycoming County)	\$ 150.00	03/15/2025
04/01/25	Tues	12:30 PM	56th Annual Loggers & Saw Millers Spring Safety Meeting (4 hours)	Johnsonburg (Elk County)	\$ 20.00	03/25/2025
04/23/25	Wed	8:00 AM	Non-Commercial Forestry Projects for Timber Harvesters (4 Hours)	State College (Centre County)	\$ 50.00	04/16/2025
04/24/25	Thurs	1:00 PM	Boundary Lines, Maps & Deeds (4 hours)	Montoursville (Lycoming County)	\$ 50.00	04/17/2025
04/25/25	Fri	8:00 AM	Native Plants of Pennsylvania (4 hours)	Huntingdon (Huntingdon County)	\$ 50.00	04/18/2025
04/28/25	Mon	8:00 AM	Pennsylvania Wildlife (4 hours)	Mt Wilson (Lebanon County)	\$ 50.00	04/21/2025
05/06/25	Tues	7:30 AM	Game of Logging - Level 2 (8 hours)	Penfield (Clearfield County)	\$ 150.00	04/29/2025
05/07/25	Wed	7:30 AM	Game of Logging - Level 3 (8 hours)	Penfield (Clearfield County)	\$ 150.00	04/30/2025
05/08/25	Thurs	7:30 AM	Game of Logging - Level 4 (8 hours)	Penfield (Clearfield County)	\$ 150.00	05/01/2025
05/09/25	Fri	8:00 AM	PA Wildlife Species of Greatest Conservation Need (4 hours)	Elverson (Chester County)	\$ 50.00	05/02/2025
05/15/25	Thurs	7:30 AM	Game of Logging - Level 2 (8 hours)	Wellsboro (Tioga County)	\$ 150.00	05/08/2025
06/06/25	Fri	1:00 PM	Timber Show CE Update (4 hours)	PA Furnace (Centre County)	\$ 20.00	05/30/2025

- ◆ Any employed resident of Pennsylvania is eligible to apply for up to 50% reimbursement of their training registration fees through the AgConnect program. For more information visit: <https://bit.ly/3TinTnM>
- ◆ Employees insured through Eastern Alliance Insurance Group can have the registration fee for Game of Logging classes paid by WJ Cox Insurance. Please submit proof of insurance with your reg. form.
- ◆ Northern Tier Hardwood Association Members can apply for a 50% reimbursement of registration costs after completing courses. Contact NTHA at 570-265-7753.

OTHER CONTINUING EDUCATION TRAINING

Additional training opportunities are available through numerous organizations across Pennsylvania and adjoining states. Training courses taken from other sources may qualify for PA SFI core or continuing education credit, provided the subject of the course is relevant to the SFI program, and if some legitimate form of documentation is provided to the PA SIC office for proof of content and attendance (See section 5.7 of PA SFI Training Program Policy). Outside credits are subject to all Pennsylvania SFI Professional Timber Harvester Training Program Policy requirements. To submit a Non-PA SFI training course please fill out a copy of the Non-PA SFI Course Credit Form (available on our website under "Forms" section or by contacting the PA SIC office) and send it to the PA SIC office with all necessary paperwork and a check for \$20 made payable to the "PA SFI Implementation Committee" for administrative costs. Note that a separate \$20 fee is required for each course submitted. Refer to the Training Program Policy for complete details on training requirements.

The PA SIC maintains a listing of all pre-approved Non-PA SFI CE training courses that we have been made aware of. It can be found on our website: <http://sfiopa.blogspot.com>

SELF-PACED/ASYNCHRONOUS ONLINE LOGGER TRAINING COURSES

- Self-paced/Asynchronous online courses give training participants the flexibility to complete training when it is most convenient for them. The user is in control of what they learn, when they learn it, and where they learn it.
- Several self-directed training courses for loggers have been approved for continuing education (CE) credit in the Pennsylvania SFI Professional Timber Harvester Training Program.
- These online continuing education classes require a high-speed internet connection, and a computer or smart phone with functioning speakers.

To learn more and participate in approved online logger training courses go to: <https://sfiopa.org/loggers/virtual-logger-training/>

2025 Spring Course Registration Form

- THIS TRAINING SCHEDULE MAY CHANGE AT ANY TIME WITHOUT ADVANCED NOTIFICATION. For current training offerings please visit: www.sfiopa.org/register
- Registration fees are **non-refundable and non-transferrable** after the course registration deadline if the course is held and you do not attend.
- Registration is on a first come, first served basis. Your space in a course will not be reserved until the registration fee is paid. Please do not delay in making payment or your space could be given to another participant.
- Courses may be cancelled if a minimum number of students are not registered by the registration deadline. Please register on time.
- For a full description of the Training Program Policies, please visit www.sfiopa.org/requirements or contact the PA SIC office (mark@sfiopa.org / 814-230-2866)

ATTENDEE	COURSE DATE	COURSE NAME	COURSE LOCATION	COST
(Please Print Clearly / One Course Participant Per Form)				
Name: (Full First, Middle Initial, Last)				
Home Mailing Address:				
Home or Cell Phone: () _____ - _____				
Email:				
Occupation (circle one):	• Forester • Logger-owner • Logger-employee • Landowner • Office personnel • Truck driver • Other		Total Amount Enclosed:	
Make checks payable to: "Pennsylvania SIC" Mail to: PA SFI Implementation Committee 748 Gravel Point Road Howard, PA 16841				
Class location and additional information will be sent to you when we receive your registration and payment				

COURSE DESCRIPTIONS

CORE TRAINING:

Required to be recognized as an SFI Qualified Logging Professional. All 3 core training courses must be completed (in any order) within a 2 year period. Professional Timber Harvesting Essentials and/or Game of Logging Level 1 can be taken for CE Credit, IF you have not already completed the training in the last 5 years.

- **Professional Timber Harvesting Essentials (8 hours)** - Covers general safety considerations, chainsaw safety, logging equipment safety (harvesters, loaders, skidders, etc.), trucking safety and Occupational Safety and Health Administration (OSHA) Standards that apply to timber harvesting and related activities. Also covers pertinent aspects of Pennsylvania's Clean Streams laws and other water resource protection regulations, Best Management Practices (BMPs), hazardous material control, and logging aesthetics.
- **Game of Logging - Level 1 (8 hours)** - Focuses on introducing the participant to the "open face" felling technique and the development of skills to safely use it. Topics covered include personal protective equipment, chainsaw safety features, chainsaw reactive forces, bore cutting, pre-planning the fell, and understanding hinge wood strength. Participants need safety equipment (hard hat, chaps, eye protection, ear protection, and sturdy boots), water, lunch, and should be prepared to spend the day outside (rain or shine). Participants are not required to provide their own chainsaw.
- **First Aid & CPR (4 hours)** - Because timber harvesting is a hazardous occupation, OSHA regulations require that everyone who works in the woods maintain current First Aid & CPR training from a provider who can issue a certificate or a card as documentation of hands-on training (i.e., no online certifications will be accepted). Individuals do not need to complete this training through the PA SFI Professional Timber Harvester Training Program; however, they must provide proof of First Aid & CPR certification to receive their initial training card (we cannot accept the MSHA 5000-23 form as satisfaction of this requirement). Course duration varies by instructor. DOES NOT COUNT FOR CE CREDIT.

CONTINUING EDUCATION (CE):

One (1) year of CE credit is given for each four (4) hours of CE training completed. CE credits can only extend your validation date a maximum of three (3) years from the current calendar year. CE credit will not be awarded for taking the same class more than once in a five (5) year period.

- **2025 Timber Show CE Update (4 hours)** - Timber show attendees can participate in this CE Update courses being offered at the 2025 Timber Show. Walk-ups will be accepted, but registration is required ahead of time for those who wish to receive PA SFI continuing education credits. This year's training will focus on wildland fire prevention & response for loggers.
- **56th Annual Loggers and Saw Millers Spring Safety Meeting (4 hours)** - TO RECEIVE CE CREDIT PARTICIPANTS MUST ATTEND BOTH THE SFI UPDATE CLASS AND THE ANNUAL SAFETY MEETING THAT FOLLOWS. THIS WILL BE MORE THAN A 4-HOUR TIME COMMITMENT. Come be a part of the oldest logging safety meeting in the United States. Free dinner and door prizes. This year's training is focused on maintaining safe roads by maintaining stable roads. The evening meeting will feature a discussion on rattlesnakes.
- **Boundary Lines, Maps & Deeds (4 hours)** - This course covers the fundamentals of researching deeds, locating and marking boundary lines on the ground using a map and compass and GPS technology, and how to make maps using conventional paper methods, freeware such as Google Earth, and other mapping software. This training involves both classroom and field exercises.
- **Game of Logging (8 hours, each Level)** - These courses cover chainsaw safety and safe/efficient harvesting techniques. They MUST be taken in order. Level 1 (see description under Core Training section). Level 2 focuses on saw maintenance, chain sharpening techniques, releasing spring poles safely, and directional tree felling. Level 3 focuses on handling difficult trees. Topics covered include limbing, wedging techniques and hinge placement. Level 4 is a review of previous levels with participants practicing skills at working speed. Storm Damage provides tips on how to safely handle the dangerous pressures and tensions associated with blown-down and storm damage timber (Prerequisite Levels 1 and 2). Game of Logging training is conducted in the field.
- **Hydraulic Systems Safety & Maintenance (8 hours)** - This hands-on course will introduce participants to the theory of hydraulic operation, nomenclature and function of associated components, safety practices, general maintenance, and diagnostic troubleshooting of hydraulic systems.
- **Native Plants of Pennsylvania (4 hours)** - Native plants have evolved naturally in a region over many years, rather than being introduced from another area. This course provides an introduction to native plants for foresters and logging professionals. It features common native plants in Pennsylvania and surrounding regions and includes in-field instruction.
- **Non-Commercial Forestry Projects for Timber Harvesters (4 hours)** - While they may not be directly profitable for the landowner, non-commercial forestry work is crucial for achieving sustainable forest management and enhancing future timber values. Public land agencies such as the Pennsylvania Game Commission (PGC) and Pennsylvania Department of Conservation and Natural Resources (PA DCNR) have funding for non-commercial forestry practices both included in their operational budgets as well as part of project-specific grants. This course aims to provide commercial loggers with the information needed to consider adding non-commercial forestry work to their service offerings.
- **Pennsylvania Wildlife (4 hours)** - a comprehensive four-hour course on common wild birds and mammals found in Pennsylvania with a specific emphasis on the habitat needs of white-tailed deer, black bears and wild turkeys. Included will be segments on identifying wildlife foods, tracks, other sign and calls. The legacy of Pennsylvania's premier wildlife artist, the late Ned Smith, will also be covered.
- **PA Wildlife Species of Greatest Conservation Need (4 hours)** - A comprehensive course on Pennsylvania wildlife that are at risk for a variety of reasons. Causes for population declines and restoration efforts for several species will be highlighted. Up-to-date information on the status of state and federal threatened endangered species and potential impacts on timber harvesting will be included.

Pennsylvania Sustainable Forestry Initiative®
 Implementation Committee
 748 Gravel Point Rd, Howard, PA 16841
 Phone: (814) 230-2866 / Fax: (814) 355-1022
 Email: mark@sfiopa.org / www.sfiopa.org